

# Pre Rigging



## Remote control kit

### Remote control top mount single

06255-ZW5-U00HE

- Kit contains:
  - Remote control 06240-ZW5-U40
  - Switch panel kit 06323-ZW1-V04

Application BF40, BF50



### Remote control flush mount

06255-ZW5-U10HE

- Kit contains:
  - Remote control 06240-ZW7-U00
  - Switch panel kit 06323-ZW1-V04

Application BF40, BF50



### Remote control top mount dual installation

06255-ZW5-U20HE

- Kit contains:
  - Remote control 06240-ZW5-U60
  - Switch panel kit 06323-ZW1-V14
  - Dual engine tie bar 53520-ZV7-U10

Application BF40, BF50



### Remote control top mount single EFI

06250-ZW5-U40HE

- Kit contains:
    - Remote control 06240-ZW5-U40
    - Switch panel kit 06323-ZW5-643
- Suitable for analogue and digital gauges

Application from BF75DK0 until BF225



# Pre Rigging



## Remote control kit

### Remote control flush mount EFI

06250-ZW5-U70HE

- Kit contains:
    - Remote control 06240-ZW7-U00
    - Switch panel kit 06323-ZW5-643
- Suitable for analogue and digital gauges



*Application as from BF75DK0 until BF225*

### Remote control top mount dual EFI installation

06250-ZW5-U60HE

- Kit contains:
  - Remote control: 06240-ZW5-U60
  - Switch panel: 06323-ZW5-753
  - Dual engine tie bar: 53520-ZY3-U00HE
  - Suitable for analogue and digital gauges



*Application as from BF75DK0 until BF225*



# Pre Rigging



## Remote control kit

### Left remote control top mount single EFI installation

06270-ZW5-U00HE

- Kit contains:
    - Remote control 06240-ZW5-U50
    - Switch panel kit 06323-ZW5-643
- Suitable for analogue and digital gauges



Application as from BF75DK0 until BF225

### Left remote control flush mount EFI installation

06270-ZW5-U10HE

- Kit contains:
    - Remote control 06240-ZW5-U10
    - Switch panel kit 06323-ZW5-643
- Suitable for analogue and digital gauges



Application as from BF75DK0 until BF225

### Left remote control top mount dual EFI installation

06270-ZW5-U20HE

- Kit contains:
    - Remote control 06240-ZW5-U70
    - Switch panel kit 06323-ZW5-753
    - Dual engine tie bar 53520-ZY3-U00HE
- Suitable for analogue and digital gauges



Application as from BF75DK0 until BF225

# Pre Rigging



## Steering plate kit

### Steering plate kit

06234-ZW1-000HE

- Kit contains:
  - Steering plate 53234-ZW1-010
  - 90109-ZV5-000 bolt studs 2x10x28
  - 90306-ZV5-003 nuts 10 mm

*Application BF75, BF90*



### Steering plate kit

06234-ZW5-000HE

- Kit contains:
  - Steering plate 53234-ZW5-010
  - 90109-ZV5-000 bolt studs 2x10x28
  - 90306-ZV5-003 nuts 10 mm

*Application BF115, BF130*



# Pre Rigging



## Hose kit

### Rigging hose kit for the perfects finish

06177-ZY3-U00HE

- Kit contains:
  - 1.5 m long grey hose 0.5 Ø
  - 1 boat fitting and 2 Rilsan collar

*Applicable for all rigged models*



### Grey hose 10-meter extension 0.5 Ø

06177-ZY3-U10HE

*Applicable for all rigged models*



### Boat fitting

200 / 200

06177-ZY3-U80HE

- Kit contains:
  - 5 boat fittings

*Applicable for all rigged models*

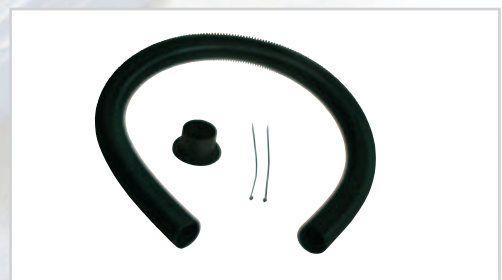


### Rigging hose kit for the perfect finish

06177-ZY6-U00HE

- Kit contains:
  - 1.5m long black hose 0.5 Ø
  - 1 black boat fitting and 2 black rilsan collar

*Applicable for all rigged models*



# Pre Rigging



## Hose kit

Black hose 10-meter extension 0.5 Ø

06177-ZY6-U10HE

*Applicable for all rigged models*



Boat fitting

06177-ZY6-U80HE

- Kit contains:
  - 5 black boat fittings

*Applicable for all rigged models*



Rilsan collar

06177-ZY3-U90HE

- Kit contains:
  - 5 Rilsan collar

*Applicable for all rigged models*



Grommets for hose kits of 0.5 Ø (06177-ZY3-U00HE)

32168-ZW1-000AH

*Applicable model BF75, BF90 from AT up to A2*



# Pre Rigging



## Hose kit

Remote control grommet for hose kits of 0.5 Ø

40105-ZY9-000

Applicable model BF75, BF90 DK0



Steering grommet for hose kits of 0.5 Ø

40105-ZY9-A00

Applicable model BF75, BF90 DK0



Grommets for hose kits of 0.5 Ø (06177-ZY3-U00HE)

40106-ZW7-U00

Applicable model BF115, BF130, BF135, BF150



Grommets for hose kits of 0.5 Ø (06177-ZY3-U00HE)

40105-ZY3-000

Applicable model BF175, BF200, BF225



# Pre Rigging



## Digital gauges and complementary part

### Digital Speedometer with fuel management

06373-ZY3-810

- Speed LCD 5-120 km/h, 3-75 mph, 3-65 knots
- Fuel level LCD 8 bars
- Volt LCD 10.0 – 16.0 V
- Trip LCD 999,9 km/mile
- Fuel management
  - Fuel flow LCD 2.0 – 999.9 (L/H), 0.5-75.0 GHP
  - Fuel economy LCD max 999.9 km/l, MPG
  - Fuel integration LCD max 999.9 L, G
  - Water in fuel LCD alarm segment



Application as from BF75 until BF225

### Digital Tachometer

06375-ZY3-810

- Tacho LCD max 999 (x 12 rpm)
- Trim LCD 13 bars
- Hour LCD max 9999 hours
- Overheat warning LCD alarm segment
- Oil pressure warning LCD alarm segment
- ACG warning LCD alarm segment
- PGM-F1 Warning LCD alarm segment
- Waterpressure meter available in carbon look 37353-ZY3-000AH. Needed part:19271-ZV5-000AH



Application as from BF75 until BF225

### Meter harness kit

06326-ZY3-801

- Kit contains:
    - Meter harness A 32540-ZY3-800
    - Indicator panel cable 32185-ZY6-000
- To be used with digital speedometer kit 06373-ZY3-810



Application as from BF75 until BF225

### Tube for digital speedometer

37202-ZW5-U01

- 8 meter long
- Black PVC tube with inner  $\varnothing$  4mm and outer  $\varnothing$  7mm





# Pre Rigging



## Digital gauges and complementary part

■ '20 Main wire harness (length 6.6 m)

32205-ZY6-020AH

- Engine end has 14 pin and 6 pin panel indicator harness connectors
- Helm end has both 6 & 3 pin connector for panel indicator lights and/or PGM-FI indicator light display for digital gauges

*Applicable as from BF115 until BF225*



■ '25 Main wire harness (length 8.2 m)

32205-ZY6-025AH

- Engine end has 14 pin and 6 pin panel indicator harness connectors
- Helm end has both 6 & 3 pin connector for panel indicator lights and/or PGM-FI indicator light display for digital gauges

*Applicable as from BF115 until BF225*



■ '23 Wire "Universal" main engine harness (length 6.6 m)

32500-ZY6-020AH

- Engine end has 14 pin, 3 pin and 6 pin panel indicator harness connectors, connector usage is model specific
- Helm end has both 6 & 3 pin connector for panel indicator lights and a PGM-FI indicator light display for digital gauges

*Applicable as from BF25 until BF225*



■ '23 Wire "Universal" main engine harness (length 8.2 m)

32500-ZY6-025AH

- Engine end has 14 pin, 3 pin and 6 pin panel indicator harness connectors, connector usage is model specific
- Helm end has both 6 & 3 pin connector for panel indicator lights and a PGM-FI indicator light display for digital gauges

*Applicable as from BF25 until BF225*



# Pre Rigging



## Digital gauges and complementary part

### 9 Wire panel indicator harness (6.6 m)

32185-ZY6-020AH

- Engine end has a 6 pin connector
- Helm end has both 6 & 3 pin connector for panel indicator lights on key switch panel and/or PGM-FI indicator light display for digital gauges.
- Includes sealing caps provided for unused Connector

Applicable from BF115 until BF225



### 9 Wire panel indicator harness (8.2 m)

32185-ZY6-025AH

- Engine end has a 6 pin connector
- Helm end has both 6 & 3 pin connector for panel indicator lights on key switch panel and/or PGM-FI indicator light display for digital gauges.
- Includes sealing caps provided for unused Connector

Applicable from BF115 until BF225



### 9 Wire panel indicator harness extension

32185-ZY6-004AH

- Fits: 4 foot (1.25 m) extension harness to extend the 6 pin and 3 pin connection at the helm end of the following harnesses:
  - 20 wire main engine harness
  - 23 wire universal main engine harness
  - 9 wire panel indicator harness



### 7 Wire key switch panel harness

36170-ZW7-110AH

- Fits: 2 light push to choke panel
  - 4 light PGM-FI panel – single engine
  - 4 light PGM-FI panel dual engine (2 required)
- Supports both digital and analogue gauges function.  
Sold separately as a replacement harness or as upgrade from old style panels for digital gauge function.



# Pre Rigging



## Gauges kit

### Gauges kit black advantage flat lens

06350-ZW5-00AHE

- Kit contains:
    - Instrument set 06300-ZW5-010ZA
    - Instrument harness 32103-ZW7-000AH
- Includes US Fuel gauge operates on ohms resistance 240' empty or 33 full



*Applicable models as from BF40 up to BF225*

### Gauges kit black advantage flat lens

06350-ZW5-00BHE

- Kit contains:
    - Instrument set 06300-ZW5-010ZB
    - Instrument harness 32103-ZW7-000AH
- Includes US Fuel gauge operates on ohms resistance 240' empty or 33 full



*Applicable models as from BF40 up to BF225*

### Gauges kit black advantage flat lens dual installation

06330-ZW5-00AHE

- Kit contains:
  - Tachometer 37250-ZW5-010ZA
  - Trim meter 37260-ZW5-000ZA
  - Voltmeter 37450-ZW5-000ZA
  - Instrument harness 32103-ZW7-000AH



*Applicable models as from BF40 up to BF225*

### Gauges kit white advantage flat lens dual installation

06330-ZW5-00BHE

- Kit contains:
  - Tachometer 37250-ZW5-010ZB
  - Trim meter 37260-ZW5-000ZB
  - Voltmeter 37450-ZW5-000ZB
  - Instrument harness 32103-ZW7-000AH



*Applicable models as from BF40 up to BF225*

# Pre Rigging



## Gauges kit

### Basic gauges kit black advantage flat lens

06352-ZW5-00AHE

- Kit contains:
  - Tachometer 37250-ZW5-010ZA
  - Trim meter 37260-ZW5-000ZA
  - Instrument harness 32103-ZW7-000AH

*Applicable models as from BF40 up to BF225*

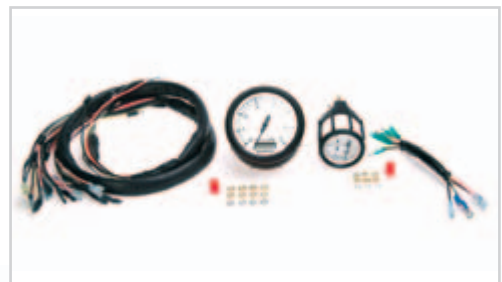


### Basic gauges kit white advantage flat lens

06352-ZW5-00BHE

- Kit contains:
  - Tachometer 37250-ZW5-010ZB
  - Trim meter 37260-ZW5-000ZB
  - Instrument harness 32103-ZW7-000AH

*Applicable models as from BF40 up to BF225*



### EU Gauges kit black advantage flat lens

06355-ZW5-00AEU

- Kit contains:
    - Instrument set 06320-ZW5-00ZAE
    - Instrument harness 32103-ZW7-000AH
- Includes EU fuel gauge, operates on 10-180 ohms resistance

*Applicable models as from BF40 up to BF225*

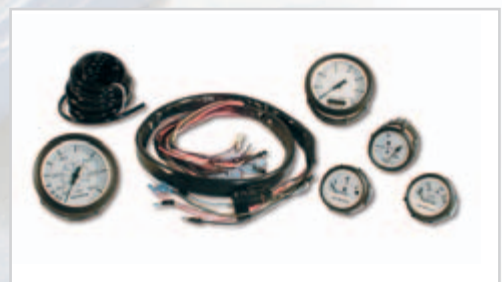


### EU Gauges kit white advantage flat lens

06355-ZW5-00BEU

- Kit contains:
    - Instrument set 06310-ZW5-00ZBE
    - Instrument harness 32103-ZW7-000AH
- Includes EU fuel gauge, operates on 10-180 ohms resistance

*Applicable models as from BF40 up to BF225*



# Pre Rigging



## Gauges kit

### US black gauges kit first installation

06335-ZW5-00AHE

- Kit contains:
  - Speedometer 37200-ZW5-000ZA
  - Voltmeter 37450-ZW5-000ZA
  - Fuel meter US 37300-ZW5-000ZA operates on 240-33 ohms
  - Instrument harness 32103-ZW7-000AH



*Applicable models as from BF40 up to BF225*

### US white gauges kit first installation

06335-ZW5-00BHE

- Kit contains:
  - Speedometer 37200-ZW5-000ZB
  - Voltmeter 37450-ZW5-000ZB
  - Fuel meter US 37300-ZW5-000ZB operates on 240-33 ohms
  - Instrument harness 32103-ZW7-000AH



*Applicable models as from BF40 up to BF225*

### EU black gauges kit first installation

06335-ZW5-00AEU

- Kit contains:
  - Speedometer 37200-ZW5-000ZA
  - Voltmeter 37450-ZW5-000ZA
  - Fuel meter 37320-ZW5-00ZAE 10-180 ohms
  - Instrument harness 32103-ZW7-000AH

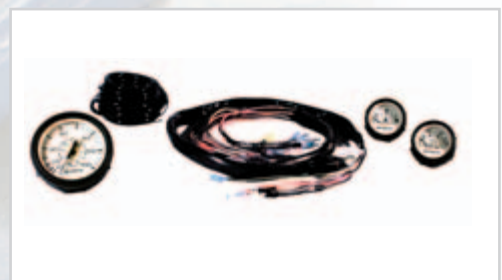


*Applicable models as from BF40 up to BF225*

### EU white gauges kit first installation

06335-ZW5-00BEU

- Kit contains:
  - Speedometer 37200-ZW5-000ZB
  - Voltmeter 37450-ZW5-000ZB
  - Fuel meter 37310-ZW5-00ZBE 10-180 ohms
  - Instrument harness 32103-ZW7-000AH



*Application as from BF40 up to BF225*

# Pre Rigging



## Gauges kit

### EU gauges kit black fog resistance

06365-ZW5-00AHE

- Kit contains:
    - Instrument set 06304-ZW5-000ZA
    - Instrument harness 32200-ZW7\_000AH
- Includes EU fuel gauge operates on 10-180 ohms resistance



*Applicable models as from BF40 up to BF225*

### EU gauges kit white fog resistance

06365-ZW5-00BHE

- Kit contains:
    - Instrument set 06304-ZW5-000ZB
    - Instrument harness 32200-ZW7-000AH
- Includes EU fuel gauge operates on 10-180 ohms resistance



*Applicable models as from BF40 up to BF225*

### US gauges kit black fog resistance

06360-ZW5-00AHE

- Kit contains:
    - Instrument set 06303-ZW5-000ZA
    - Instrument harness 32200-ZW7-000AH
- Includes US fuel gauge operates on ohms resistance 240" empty an 33 full



*Applicable models as from BF40 up to BF225*

### US gauges kit white fog resistance

06360-ZW5-00BHE

- Kit contains:
    - Instrument set 06303-ZW5-000ZB
    - Instrument harness 32200-ZW7-000AH
- Includes US fuel gauge operates on ohms resistance 240" empty or 33 full



*Applicable models as from BF40 up to BF225*

# Pre Rigging



## Gauges kit

### Gauges kit black fog resistance

06340-ZW5-00AHE

- Kit contains:
  - Tachometer 37253-ZW5-000ZA
  - Trim meter 37263-ZW5-000ZA
  - Voltmeter 37453-ZW5-000ZA
  - Instrument harness 32200-ZW7-000AH



*Applicable models as from BF40 up to BF225*

### Gauges kit white fog resistance

06340-ZW5-00BHE

- Kit contains:
  - Tachometer 37253-ZW5-000ZB
  - Trim meter 37263-ZW5-000ZB
  - Voltmeter 37453-ZW5-000ZB
  - Instrument harness 32200-ZW7-000AH



*Applicable models as from BF40 up to BF225*

### Gauges kit black standard fog resistance

06333-ZW5-00AHE

- Kit contains:
  - Tachometer 37253-ZW5-000ZA
  - Trim meter 37263-ZW5-000ZA
  - Instrument harness 32200-ZW7-000AH



*Applicable models as from BF40 up to BF225*

### Gauges kit white standard fog resistance

06333-ZW5-00BHE

- Kit contains:
  - Tachometer 37253-ZW5-000ZB
  - Trim meter 37263-ZW5-000ZB
  - Instrument harness 32200-ZW7-000AH



*Applicable models as from BF40 up to BF225*

# Pre Rigging



## Notes

A series of horizontal dotted lines for taking notes, overlaid on a large, faded background image of a boat on the water.